

# Vastavusdeklaratsioon (VD)

## Kaped

### Tootekirjeldus:

Combi Worksi liblegrafiit- ehk hallmalmist (EN GJL 200) kapede valik on 3366082-W, 3366082-G, 3366083-W ja 3366084-W

Toodete pind võib olla kaetud bituumenil põhineva värviga

Tooted ei vasta EN124-2: 2015 spetsifikatsioonile

#### Tootja – 📍

R B Agarwalla & Company

Ankurhati, Howrah  
West Bengal, INDIA

#### Tootja sertifikaat

ISO-9001:2015  
Sertifikaadi nr. FM 78831  
BSI poolt, kehtiv kuni 20. November 2024

#### Importöör ja ametlik esindaja

Combi Works Estonia OÜ

Pärnu mnt.10, 10140  
TALLINN, EESTI

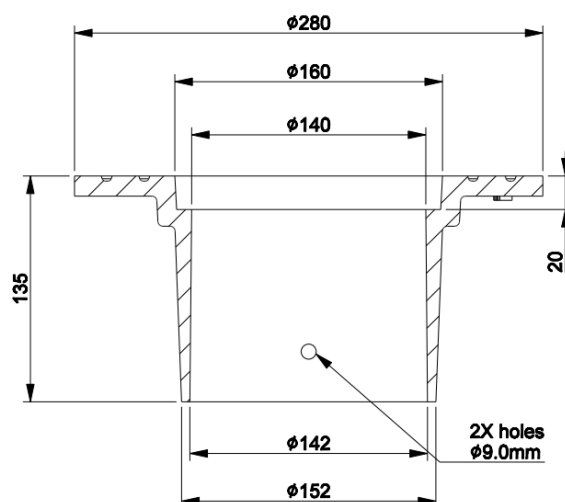


**Robert Blomstedt**  
Juhatuse liige

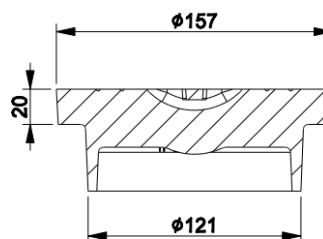
## Toodete tehniline info:

### 3366082-W Kape (Raam ja Luuk) Koormusele kuni 400kN

3366082-W Raam, Rev-F  
Mass-7.5kg.

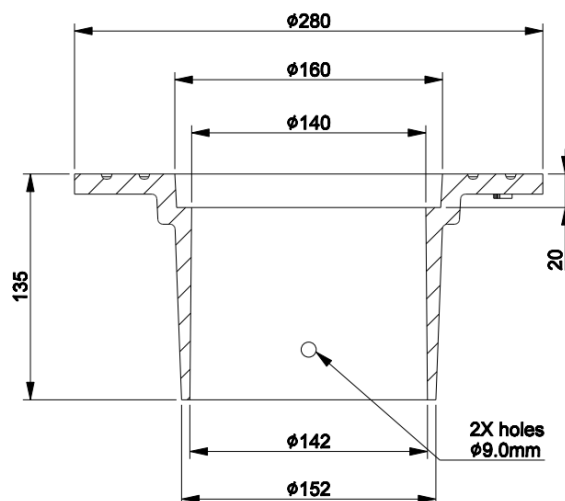
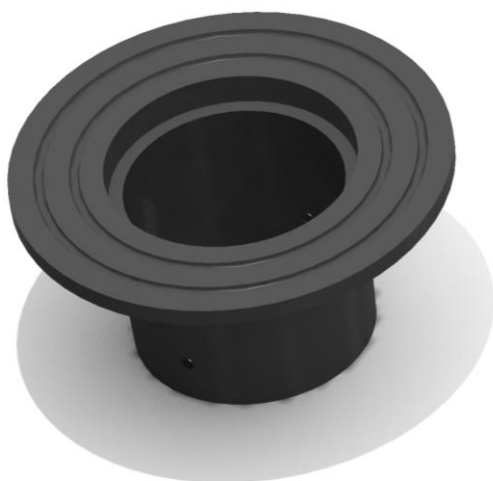


3366082-W Luuk W-tähisega, Rev-F  
Mass- 4.0kg

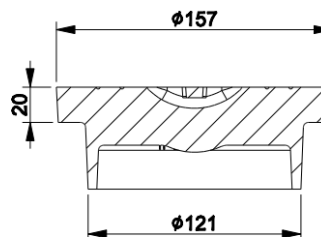


# **3366082-G** **Kape (Raam ja Luuk)** **Koormusele kuni 400kN**

3366082-G Raam, Rev-F  
 Mass-7.5kg

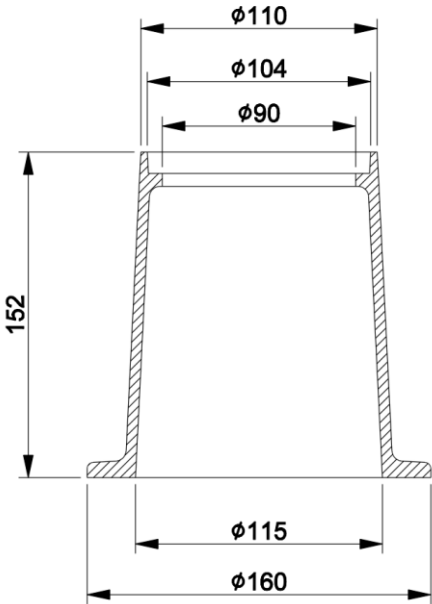


3366082- Luuk G-tähisega, Rev-F  
 Mass- 4.0kg

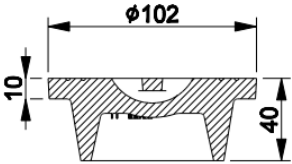


**3366083-W**  
**Kape (Raam ja Luuk)**  
**Koormusele kuni 80kN**

3366083-W Raam, Rev-C  
Mass-2.5kg

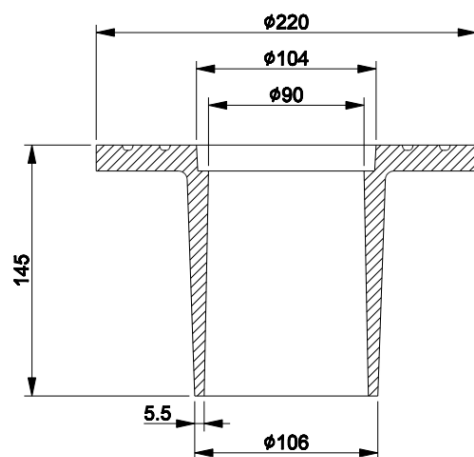
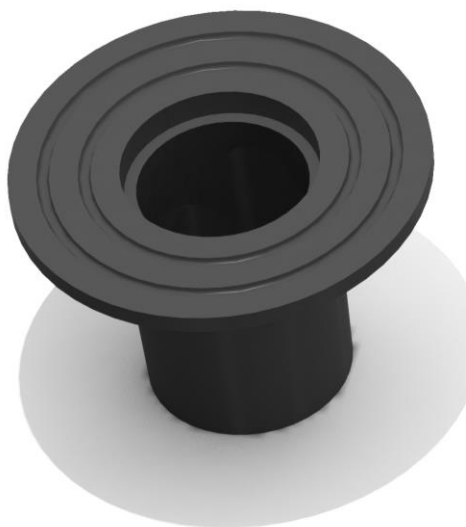


3366083-W Luuk W-tähisega, Rev-C  
Mass- 1.2kg



**3366084-W**  
**Kape (Raam ja Luuk)**  
**Koormusele kuni 210kN**

3366084-W Raam, Rev-C  
Mass-5kg



3366084-W Luuk W-tähisega, Rev-C  
Mass- 1.5kg

